

# Full Height Aluminum ADA Door

Manual or Electronic Passage Gate • Interior Application

T36-ADA



The T36-ADA is a solution for projects requiring an aesthetically pleasing interior security door. This self-closing unit provides wheelchair accessible 36" passage width (OD 40"). It is a "heavy-duty" stile and rail door that can withstand high traffic and abuse. Its low voltage strike lock can be used mechanically or electronically depending on your needs. The T36-ADA is normally paired with the T80, T80-Tandem, P60 or RD70 aluminum-polycarbonate turnstile portals.



Sample Application:  
T80-T and T36-ADA door



T36-ADA



Hydraulic door closer included.



Optional Push Bar available for free exit configurations. Can be ordered with a battery alarm or electronic switch if needed.

## We're the #1 Choice of Top Architects, Security Pros and Engineers

For two decades, Turnstiles.us has been the globally trusted name in pedestrian control equipment. Made in Ohio and shipped worldwide, we are the first choice of leading architects, facility managers, security consultants and engineers. Whether your project requires high security full-height turnstiles, waist-high units, or matching ADA accessible gates, Turnstiles.us is the secure choice. We're experienced in access control systems, from card readers to biometric scanning, to give you the power to control access.



 **TURNSTILES.us**.™  
**SECURING THE U.S. and the GLOBE**

# Full Height Aluminum ADA Door

## Manual or Electronic Passage Gate • Interior Application

T36-ADA



### Product Overview:

The T36-ADA is a solution for projects requiring an aesthetically pleasing interior security door. This self-closing unit provides wheelchair accessible 36" passage width (OD 40"). It is a "heavy-duty" stile and rail door that can withstand high traffic and abuse. Its low voltage strike lock can be used mechanically or electronically depending on your needs. The T36-ADA is normally paired with the T80, T80-Tandem, P60 or RD70 aluminum- polycarbonate turnstile portals.

### Applications:

Ideal for controlling orderly flow of foot traffic in indoor/outdoor settings where ADA passage width is required.

### Product Features and Hardware:

- Standard Clear Anodized Aluminum Extrusion (Dark Bronze Anodizing also available)
- Door handle
- Hydraulic Closer: Norton 9300 Series with aluminum finish
- Electronic Strike – Adams Rite 7100 Series, 24 VDC
- Deadlock: Adams Rite 4510 Series with 31/32" Backset
- Cylinder: Schlage C keyway-Standard – SFIC available

### Design and Construction:

- Designed for secure operation with aesthetics in mind
- Minimally exposed hardware
- Continuous Hinge

### Options:

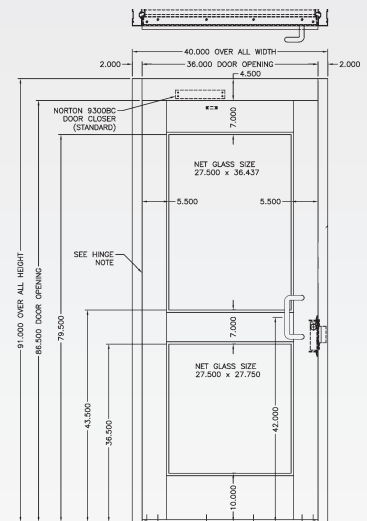
- Magnetic lock (replaces strike)
- Push Buttons (wired or wireless)
- Norton 5730 Low Energy Operator, aluminum
- Push to exit panic bar by Adams Rite 8400, Aluminum

### Measures:

- Door Opening (pedestrian clearance): 36" (914mm)
- Frame: 2"
- Exterior Height: 91" (2331 mm)
- Interior Height: 86.5

### Warranty:

Units are warranted against defects in materials and workmanship for a period of one year from date of delivery. See warranty information for specific details.



Dimensions are approximate.

### Electrical Specifications:

UL Listed Electronic Strike:  
Input Voltage: 24VDC  
Input Current: 170 mA

### Standards and Codes:

Austenitic stainless steel:  
ASTM A240, A249, A276  
Hot rolled steel:  
AISI C-1020, AISI C-1018  
Hot dipped galvanizing:  
ASTM A-143, ASTM A-153-80  
All fasteners provided meet IFI ANSI/  
ASME Fastener Standards  
American Welding Society (AWS)  
Standard D 1.1



RD70 and T36-ADA

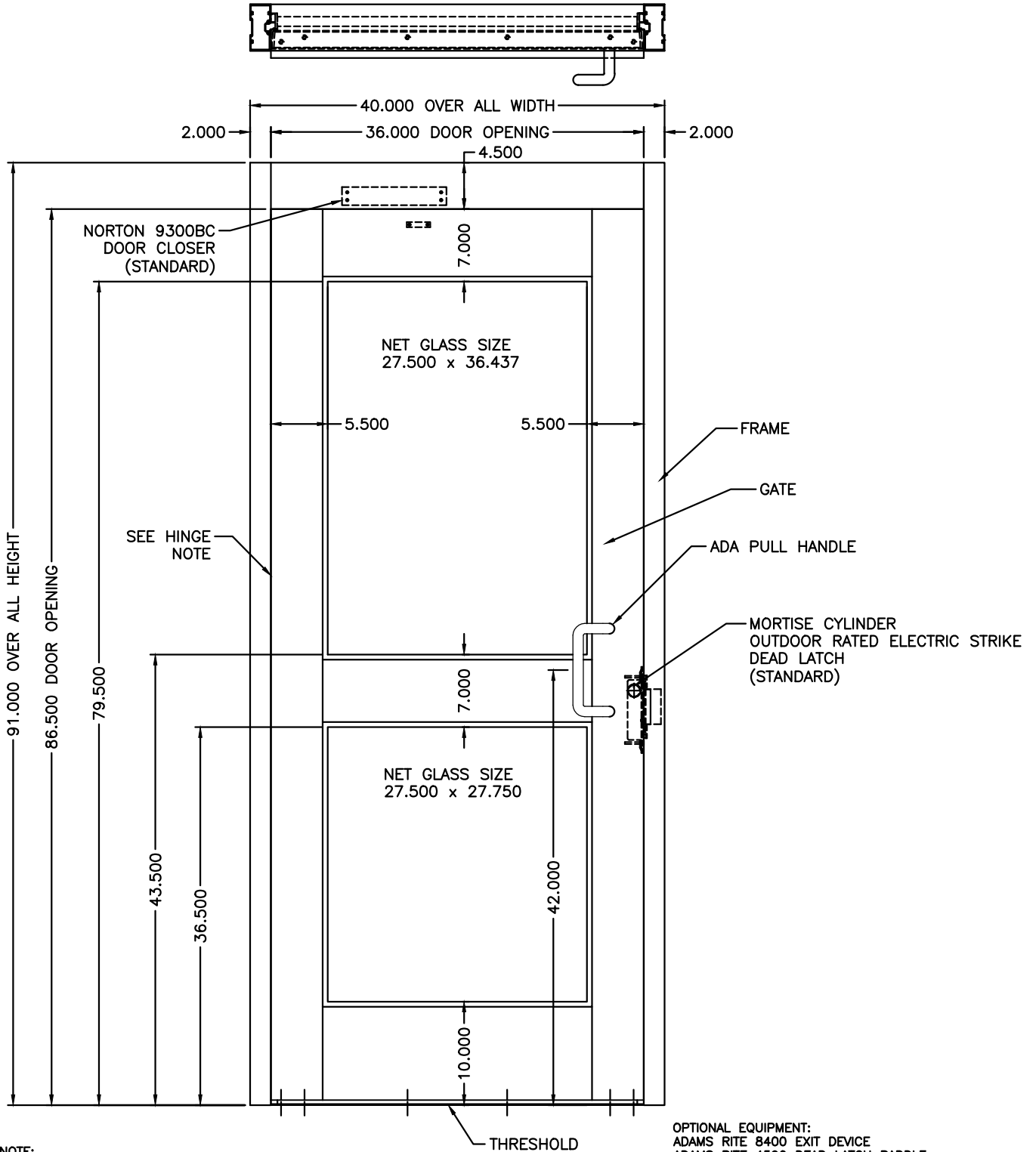


P60 and T36-ADA




REVISION HISTORY		
SYMBOL	DESC.	DATE

ALUMINUM SWING GATE P.N. T36-ADA



HINGE NOTE:  
HINGE TYPE: CONTINUOUS SPECIFY RH OR LH  
FASTENERS: STAINLESS STEEL PHILLIPS FLATHEAD SCREWS

OPTIONAL EQUIPMENT:  
ADAMS RITE 8400 EXIT DEVICE  
ADAMS RITE 4590 DEAD LATCH PADDLE  
NORTON 5700 POWER OPERATOR  
BRACKETS AVAILABLE FOR ATTACHING TO TURNSTILE OR WALL

MATERIAL: ALUMINUM EXTRUSION	SCALE: 1=14 DATE: 9/18/15	APPROVED BY:	DRAWN BY: LC III
FINISH: ANODIZED			REVISED:
TOL. UNLESS OTHERWISE SPEC. .X ± .1 .XXX ± .015 .XX ± .03 ANGLES .5°	 <b>TURNSTILES.us</b> SECURING THE U.S. and the GLOBE		
	TIFFANY T36-ADA ALUMINUM SWING GATE		