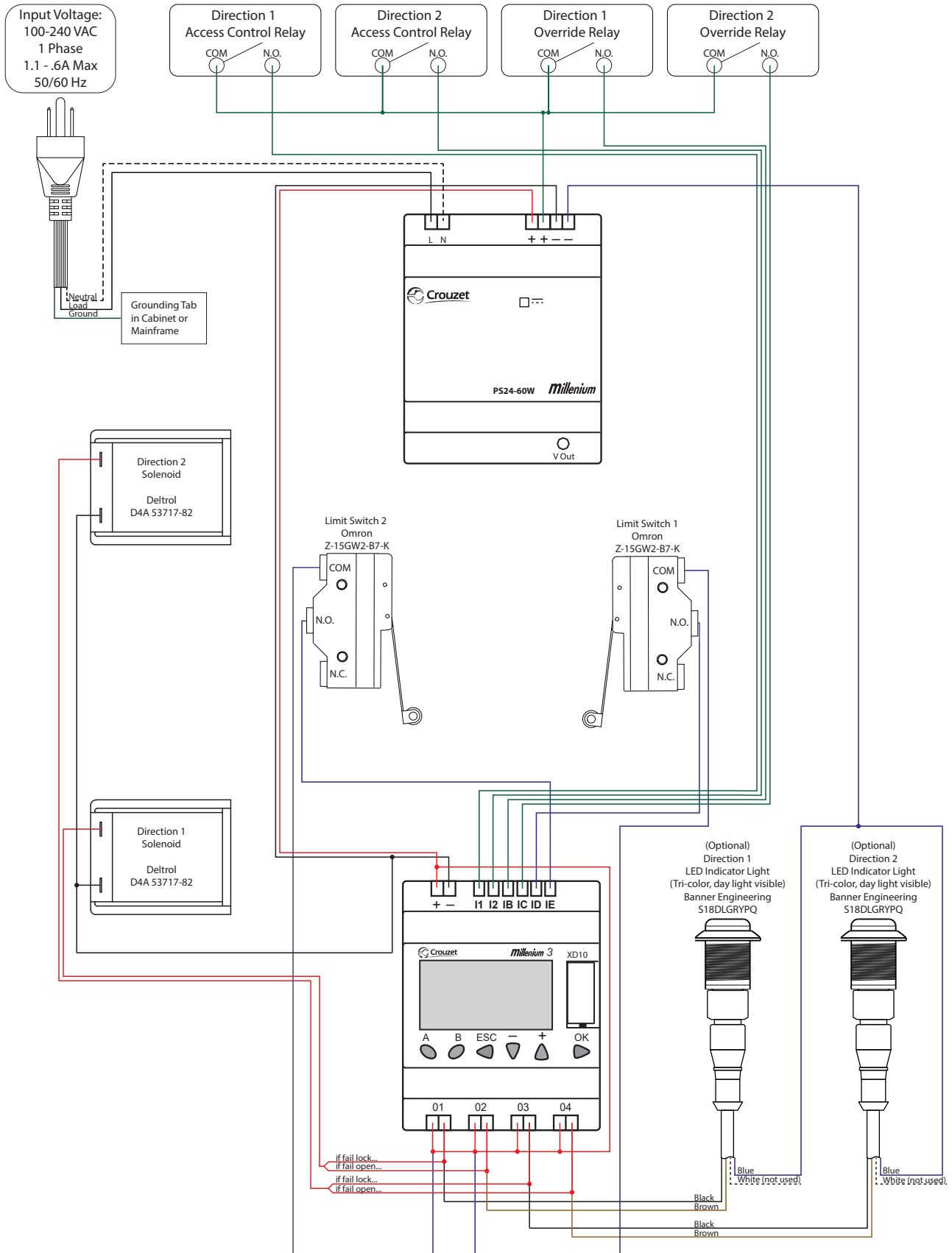
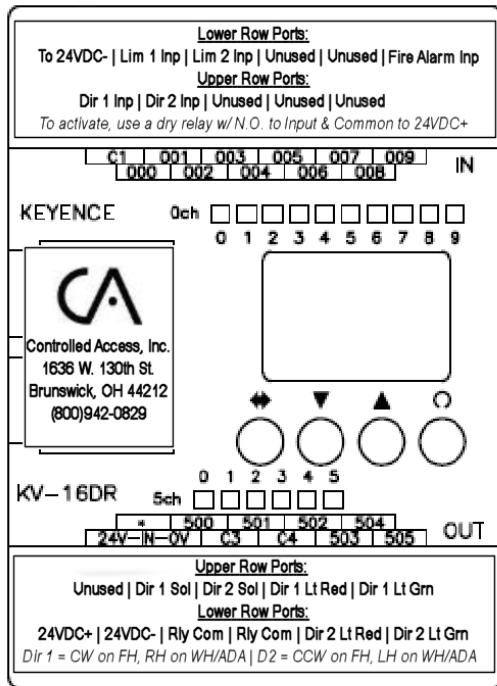


# 6500 Series Control Head w/ XD10 Controller Standard Wiring Diagram



## 6500 Series Control Head Wiring Legend

Since each control head comes pre-wired, only access control and fire alarm should need to be connected to the board. If you are unable to fit wires for access control on the 24VDC+ input on the board, the voltage can be picked up directly from the power supply or from the relay commons (C3 & C4) on the board (C4 may not have voltage depending on options purchased. There will be a red jumper to C4 if there is). You may also run a jumper from 24VDC+ to any unused input to give additional contacts if needed.



## 6789 Wiring Legend

### Definitions:

- Direction 1: Clockwise on a full height, right hand cabinets on waist highs / ada gates
- Direction 2: Counter clockwise on a full height, left hand cabinets on waist highs / ada gates
- Limit 1: Cancels direction 1 activation
- Limit 2: Cancels direction 2 activation
- Fire Alarm: Unlocks both directions while active

Inputs are triggered with 24VDC+ (PNP). Use dry normally open relays to activate. 24VDC+ to the common leg and the input you wish to trigger to the normally open leg.

**BE SURE TO DISCONNECT POWER BEFORE WIRING THE BOARD.**

### Input Side

- C1: To 24VDC -
- 000: Direction 1 Input
- 001: Limit 1 Input
- 002: Direction 2 Input
- 003: Limit 2 Input
- 004: Not Used
- 005: Not Used
- 006: Not Used
- 007: Not Used
- 008: Not Used
- 009: Fire Alarm Input

### Output Side

- \*: Unused
- 24V-IN-0V: Input voltage
- C3: Common for 500 & 501 Outputs
- C4: Common for 502-505 Outputs
- 500: Direction 1 Solenoid
- 501: Direction 2 Solenoid
- 502: Direction 1 - Red Light
- 503: Direction 2 - Red Light
- 504: Direction 1 - Green Light
- 505: Direction 2 - Green Light



**Note:** Directional status outputs are unaffected by optional key overrides as the override occurs outside of the logic controller.